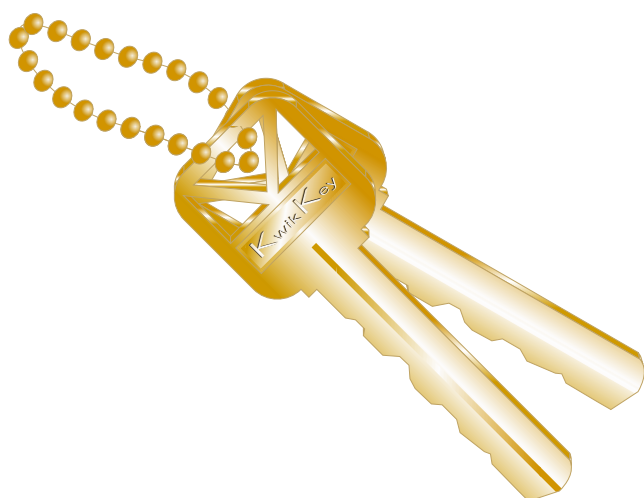


# A Tutorial from My Desktop to Yours

*Jim Cormier*

## Keys Made *While you DRAW!!!*



This is a piece I had fun creating for you. It is a simple exercise that lets you work with the Shape Tool, Duplicating, Skewing, and Fountain Fills.

Have fun with this Tutorial

530-887-8341

*Jim Cormier*

Square One Graphics

I created this design using CorelDRAW 9 but it should be able to be completed all the way back to Version 7..

Should you have any problems completing this Tutorial drop me an e-mail at [jim@squareonegraphics.com](mailto:jim@squareonegraphics.com)

<http://www.squareonegraphics.com>

**CorelDRAW™**  
The choice of  
Graphics Professionals

1. Start out by creating four rectangles on your screen and arranging them like the example shown in Figure 1 Right.
2. Next select the largest rectangle and with the SHAPE TOOL Round the corners so they resemble the ones in Figure 2 Right.
3. Now select the rectangle with the rounded corners holding the shift key down select the next smaller two smaller rectangles. *(Not the long thin rectangle at this time).*
4. On the Property Bar on the right side you will see three buttons. Click on the WELD BUTTON. The result will be that the three rectangles have now become welded into one piece. See Figure 3 Right.



5. Next you will want to draw three Pyramid shapes like the ones shown in Figure 4 Right using the Bezier Tool. To create the Pyramid shape using the Bezier Tool, select the Bezier Tool from the flyout from the Pencil Tool. Next click once at the starting point, move to the point of the Pyramid shape Click once and then move up to your starting point and click again completing the Pyramid shape..
6. Once you have the 3 Pyramid shapes created and in place on your key shape you are ready for the next step.
7. Select one of the 3 Pyramid shapes, hold down the Shift Key and click on the remaining 2 Pyramid shapes and finally the Key Shape.
8. Once you have all these items selected you will want to go to the Property Bar and Click ON the TRIM tool. This action will Trim the three Pyramid shapes out of the key shape allowing you to see through the cut-outs. The effects of this last step will not be evident until you add the fill to the key in the next step.

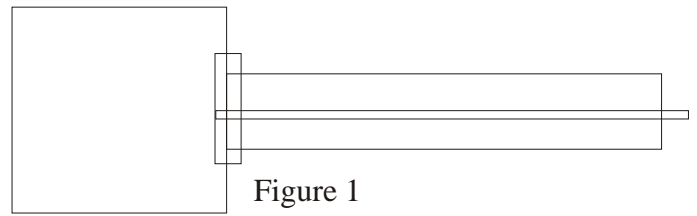
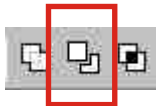


Figure 1

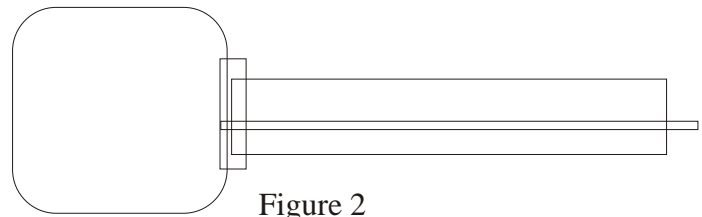


Figure 2

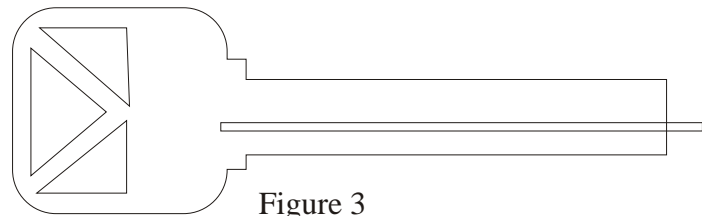


Figure 3

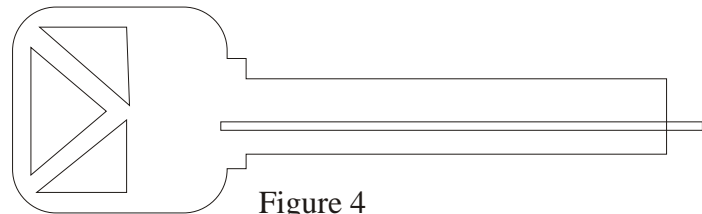


Figure 4

9. Next we will add some color to the key shape. Be sure that the key shape is selected. Click on the Fountain Fill tool in your toolbox (a flyout from the Paint Bucket Tool).
10. Once the Fountain Fill Dialog Box is open you will want to make the following changes to the default settings: Type: Linear, Angle: -105.1. Go down to the Presets window, on the Fountain Fill Dialog box, and Scroll Down the list of Preset Fills until you come to Gold Plated then Click OK.

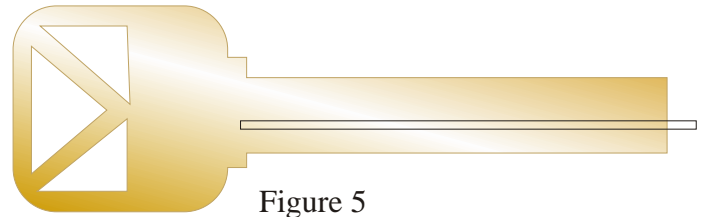
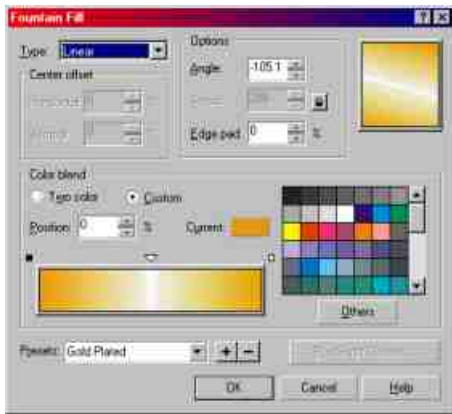


Figure 5



Figure 6

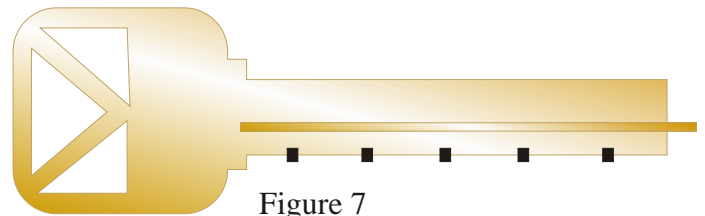


Figure 7

11. If you followed the instructions correctly thus far your image should resemble the one shown in Figure 5 Right.
12. Next select the long thin rectangle you created earlier. Next go to Edit/Copy Attributes From. Be sure that Fill, Outline, and Outline Color buttons are selected and Click OK.
13. Once you Click OK a large black arrow will appear on your screen. Move the arrow over and place it on the Key Image and Right Click.
14. The long thin rectangle should now be filled with the same Gold Plated Fill as the key is filled with. See Figure 6 Right.
15. Next select the Filled Key Shape, then go to the Corel Toolbox and click on the Shape Tool.
16. Next add about six nodes by Double Click in six different spots along the bottom edge of the main shaft of the key see Figure 7 Right..

*NOTE: Before you start the Power Clipping portion of this tutorial go to Tools/Options/Edit and UN-check the box that is marked Auto-Center New Power Clip Contents then Click OK..*

17. Now that you have five additional nodes added simply use the Shape Tool to move those nodes up and down to create the effect of the notches that are present on all keys. See Figure 7 Right.
18. Now you will add an additional node to the end of the keys shaft. Once you have created the node again using the shape tool simply pull outward to create the tip of the key. See Figure 8 Right.
19. Next you want to select the long narrow rectangle, go to effects/Power Clip/Place Inside Container and again the Large Black Arrow will appear on your screen.
20. Move the Large Black Arrow over to the Key Shape and Click on it. This will Power Clip the Long Thin Rectangle inside the Key shape thus creating the groove in your now finished key. See Figure 9 Right

## CONGRATULATIONS!!!

You did it. I hope you enjoyed this Tutorial. I would like to hear from you regarding what other types of Tutorials you would like to see.

If I can be of any assistance to you drop me an e-mail at [jim@squareonegraphics.co](mailto:jim@squareonegraphics.co).

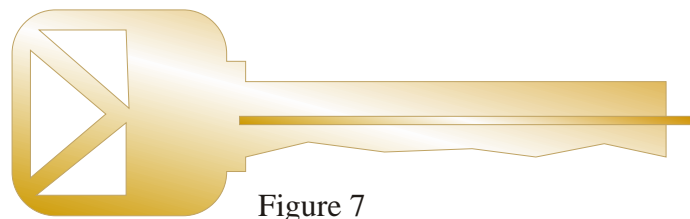


Figure 7



Figure 8



Figure 8

## Need HELP? ASK COREL MAN



[jim@squareonegraphics.com](mailto:jim@squareonegraphics.com)